



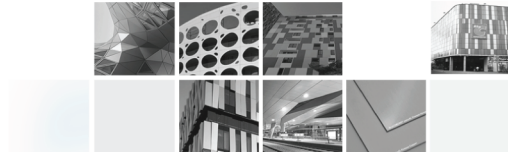
ALUCOBOND®

PANEL OPTIMIZATION: A VALUE ADDED SOLUTION FROM ALUCOBOND®

www.alucobond.com.sg

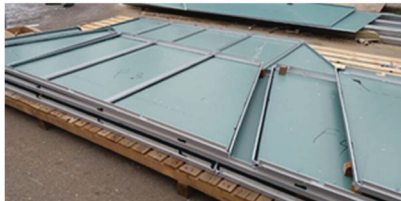
ALUCOBOND®

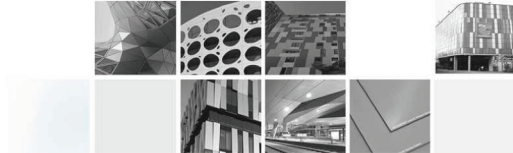
THE WORLD LEADER IN ALUMINIUM COMPOSITE MATERIALS



OPTIMIZATION

- As the name suggests, in the context of ACM panels “Optimization” is a process or methodology which churns out the maximum panel utilization for a given facade elevation/ design/ layout.
- The specially designed ALUCOBOND® Optimization program was developed to compute the most efficient lay-outs, in short time and accurately as compared to any traditional manual method.
- ALUCOBOND® is always looking to add value to its customer's business and Panel Optimization is a service in that direction.
- In our experience by using this program wastages have been brought down to around 3-5% in most cases thereby saving huge costs for our customers





ALUCOBOND® VALUE ADDED SERVICES

Earlier:

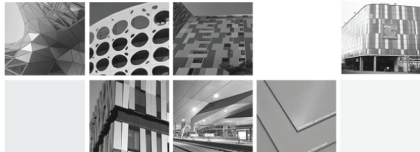
ALUCOBOND® used to supply flat sheets only as per client's requirements and manual panel optimization, fabrication and installation were managed by somebody else



Now:

ALUCOBOND® can now offer its Value added services to Optimize the panel sizes even before its produced and also in Fabrication through its Made to Measure and Ready to Install solutions.





ALUCOBOND® PANEL OPTIMIZATION PROGRAM (STEP 1)

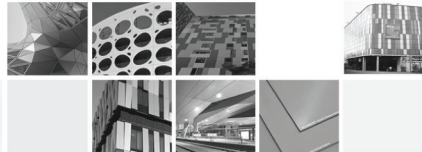
Input File from the customer preferably in excel format to contain:

- Panel layout (horizontal or vertical)
- Panel widths, Panel lengths and Quantity
- 'Return' or 'fold' margins considered
- Fixing system chosen
- Metallic or Solid color

Sizes			Qty	Sizes			Qty (Pcs)	Sizes			Qty (Pcs)
Width (mm)	Length (mm)			Width (mm)	Length (mm)			Width (mm)	Length (mm)		
586	3516	6		1292	3516	9		586	3516	6	
925	3484	6		1292	3484	52		925	3484	6	
1292	3484	66		1214	3484	16		1292	3484	66	
1292	3484	2		1292	3516	10		1292	3484	2	
1214	3484	20		1214	3516	1		1214	3484	20	
586	3484	66		900	3516	1		586	3484	66	
266	3484	2		1292	3484	50		266	3484	2	
700	3484	2		1214	3484	12		700	3484	2	
1214	3516	2		905	3484	2		1214	3516	2	
1292	3516	2		1540	3572	10		1292	3516	2	
586	3516	6		1540	3617	18		586	3516	6	
586	3484	6		1500	3617	6		586	3484	6	
271	3516	1		1311	3572	2		271	3516	1	
586	3484	62		1292	3516	1		586	3484	62	
1292	3484	64		1292	3516	4		1292	3484	64	
1214	3484	20		1292	3516	1		1214	3484	20	
590	3484	6		1214	3516	2		590	3484	6	
250	3484	4		1214	3484	14		250	3484	4	
1500	3484	6		1292	3484	14		1500	3484	6	
1500	3484	6		900	3484	2		1500	3484	6	

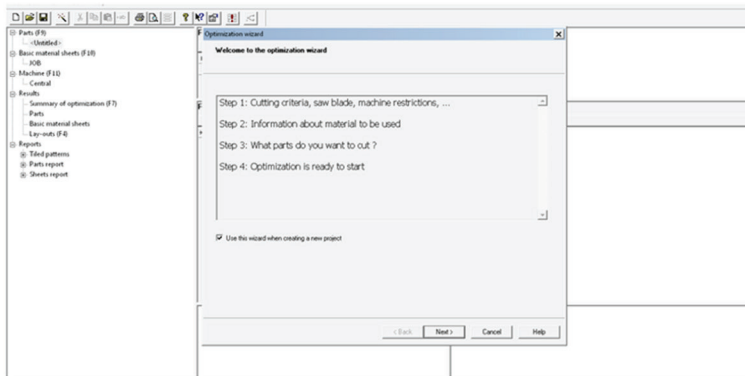
ACP Sheet Requirement

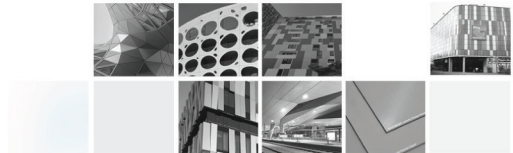
1) 1000 x 2500 - 16#	—	40 Sqr
2) 1250 x 2500 - 15	—	47
3) 1500 x 2500 - 469	—	1759
4) 1000 x 2900 - 146	—	424
5) 1250 x 2900 - 1062	—	3850
6) 1500 x 2900 - 666	—	2897
7) 1575 x 2900 - 107	—	489
8) 1000 x 3600 - 10	—	36
9) 1250 x 3600 - 6	—	27
10) 1500 x 3600 - 52	—	231
11) 1575 x 3600 - 4	—	23
12) 1500 x 4400 - 224	—	1478
	<u>2777</u>	<u>11,351</u>



ALUCOBOND® PANEL OPTIMIZATION PROGRAM (STEP 2)

Details are fed into the system- including the basic materials and nesting sizes of the panels





ALUCOBOND® PANEL OPTIMIZATION PROGRAM (STEP 3)

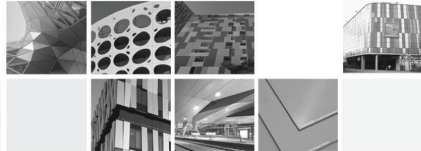
The software throws up the best possible yield (reduction of wastages to minimum possible) by combining panel sizes

Cutting Optimizer 14.9.12
Alucobond (Far East) Pte

\\MUMBSDC01\UDA\$\sumana\Desktop\OPT-ALFA\Alfa.R41
Summary of optimization (F7)

Summary of optimization (F7)

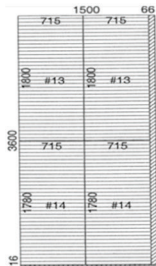
Project's description	Alfa	
Number of sheets to order		2948
Yld%		99.12
Number of lay-outs		29
Net surface		12057.45
Gross surface		12164.54
TotNofParts		3119
Waste%		0.88



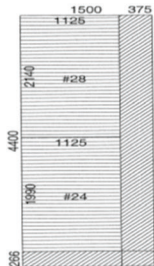
ALUCOBOND® PANEL OPTIMIZATION PROGRAM (STEP 4)

- The software also shows the layouts to be cut from the basic material ordered
- This info can be directly transferred to the CNC or panel saw operator

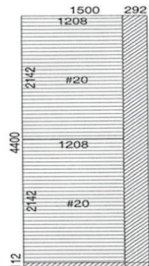
Lay#	Yid%	D	D	Length	Width	Qty	Sq. mt
28	70.40	L		1500	4400	4	26.4

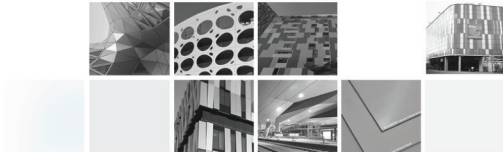


Lay#	Yid%	D	D	Length	Width	Qty	Sq. mt
25	94.80	L		1500	3600	20	108



Lay#	Yid%	D	D	Length	Width	Qty	Sq. mt
22	78.41	L		1500	4400	5	33





ALUCOBOND® PANEL OPTIMIZATION PROGRAM (STEP 5)

Final output file shows:

- What panel sizes to order
- How many to order
- Total wastage/yield %
- Cutting diagram/ Layouts
- Direction of panel installation

Basic material sheets

D	Length	Width	Prod	Sq. mt.
L	1000	3600	10	36
L	1000	2900	162	469.8
L	1250	2900	1062	3849.75
L	1250	3600	10	45
L	1250	2750	53	182.1875
L	1500	2500	467	1751.25
L	1500	2900	666	2897.1
L	1500	3600	102	550.8
L	1500	4400	245	1617
L	1500	2825	60	254.25
L	1575	2900	107	488.7225
L	1575	3600	4	22.68

ALUCOBOND®

THANK YOU!!