



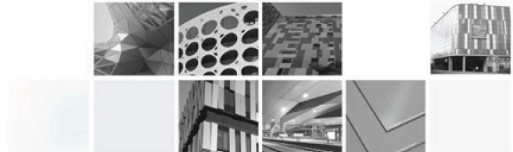
# ALUCOBOND®

MADE TO MEASURE (M2M) AND READY TO INSTALL (R2I): A VALUE ADDED SERVICE FROM THE MAKERS OF ALUCOBOND®

[www.alucobond.com.sg](http://www.alucobond.com.sg)

# ALUCOBOND®

THE WORLD LEADER IN ALUMINIUM COMPOSITE MATERIALS

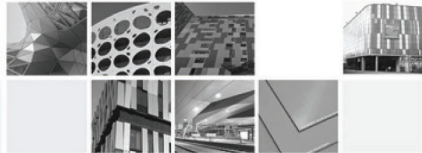


## INDEX

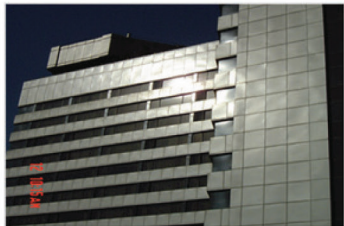
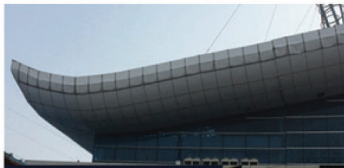
- Difference between a good execution vs a bad execution
- Elements of Value Added Services
  - Made to Measure (M2M)
  - Ready to Install (R2I)
- Application
  - Façade Applications
  - Roofing and Soffit
  - Interior Cladding
  - Ceilings
- Why Value Added Services from ALUCOBOND®?
- References

# ALUCOBOND®

THE WORLD LEADER IN ALUMINIUM COMPOSITE MATERIALS

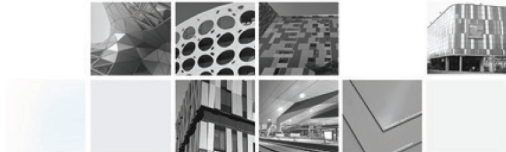


## GOOD DESIGN BUT BAD EXECUTION.....



# ALUCOBOND®

THE WORLD LEADER IN ALUMINIUM COMPOSITE MATERIALS



## GOOD DESIGN COMPLIMENTED BY EQUALLY GOOD EXECUTION....

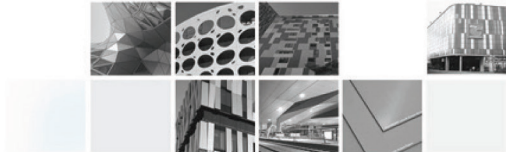
WUXI TAI LAKE INTERNATIONAL EXPO CENTER

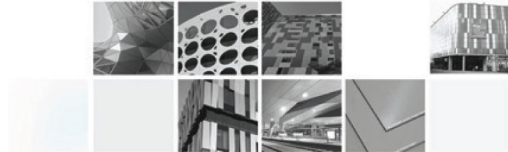


# ALUCOBOND®

THE WORLD LEADER IN ALUMINIUM COMPOSITE MATERIALS

GREAT DESIGNS....  
GREAT EXECUTION...





## REASONS FOR SUBSTANDARD OUTCOME ON THE FAÇADE

- Incorrect selection of materials and systems for a specific application
- Sub standard quality of Fabrication:
  - Bad or inconsistent Optimization of panels
  - Lack of skills, experience or the right machinery required for the job
  - Lack of right fabrication space and environment
  - Bad planning leading to shortage of time for fabrication hence a quick and poor quality job at site
- Asymmetrical fixing/ installation of ACM:
  - Incorrect or Substandard quality of frame system
  - Not using the specified fixing systems
  - Incorrect installation and detail omitted
  - Small panel sizes- means more chances of error
- Inclement weather conditions

So how do you overcome this problem.....



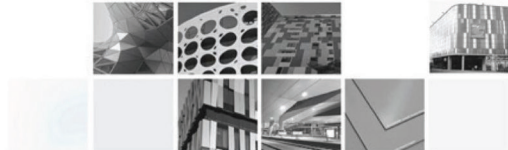
**ALUCOBOND®**

ALUCOBOND® VALUE ADDED SERVICES

[www.alucobond.com.sg](http://www.alucobond.com.sg)

# ALUCOBOND®

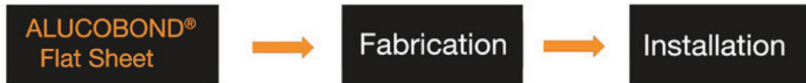
THE WORLD LEADER IN ALUMINIUM COMPOSITE MATERIALS



## WHAT IS ALUCOBOND® VALUE ADDED SERVICES

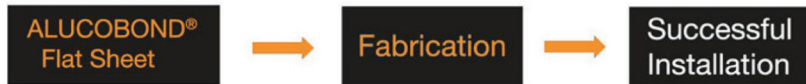
Earlier:

ALUCOBOND® used to only supply flat sheets as per client's requirements and fabrication and installation were managed by somebody else



Now:

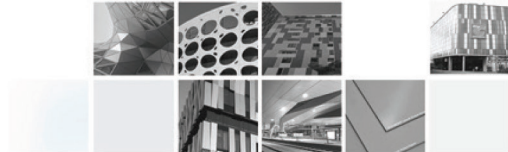
ALUCOBOND® now adds value to the flat sheet to meet client's requirements thereby ensuring the final output on a building is of highest quality





# ALUCOBOND®

THE WORLD LEADER IN ALUMINIUM COMPOSITE MATERIALS

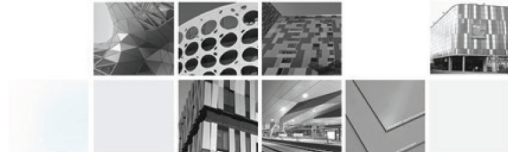


## KEY ELEMENTS OF ALUCOBOND® VALUE ADDED SERVICES

- ALUCOBOND® offers this service to help in minimizing or eliminating any possibilities of below par execution.
- Primarily these VAS are divided into 2 main categories:
  - Made to Measure (M2M)
  - Ready to Install (R2I)
- Whatever is your application, we have the solution:
  - Façade
  - Roofing
  - Soffit
  - Interior
  - Ceiling

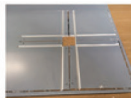
# ALUCOBOND®

THE WORLD LEADER IN ALUMINIUM COMPOSITE MATERIALS



## MADE TO MEASURE (M2M)

- Elements of M2M:
  - Facade Panel Optimization
  - Cut to size
  - Routing
  - Notching
  - Drilling
- Special designs
- Perforation



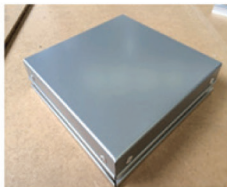
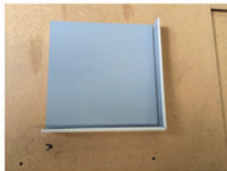
# ALUCOBOND®

THE WORLD LEADER IN ALUMINIUM COMPOSITE MATERIALS



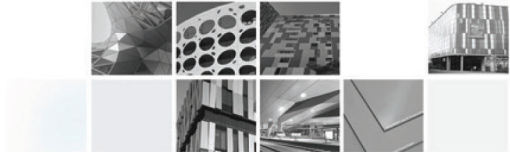
## READY TO INSTALL (R2I)

- Elements of R2I:
  - In addition to M2M
    - Folding
    - Fixing System assembly



# ALUCOBOND®

THE WORLD LEADER IN ALUMINIUM COMPOSITE MATERIALS



## FACADE APPLICATION

- Products

- ALUCOBOND® PE/ Plus/ A2



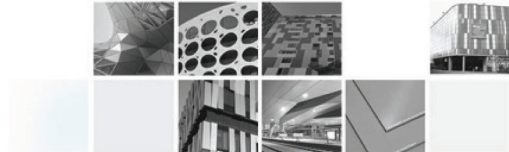
HUNTSMAN



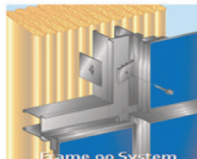
FLYCO

# ALUCOBOND®

THE WORLD LEADER IN ALUMINIUM COMPOSITE MATERIALS

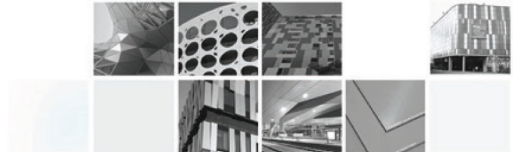


## FACADE APPLICATION



# ALUCOBOND®

THE WORLD LEADER IN ALUMINIUM COMPOSITE MATERIALS



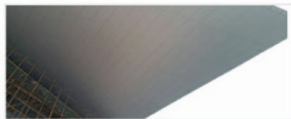
## ROOFING AND SOFFIT APPLICATIONS

- Products

- ALUCOBOND® PE/ Plus/ A2



Shanghai Di shui Lake Crown Plaza Hotel



ShanDong Weifang Conference Centre



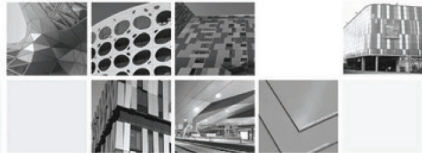
XuZhou Olympic Stadium



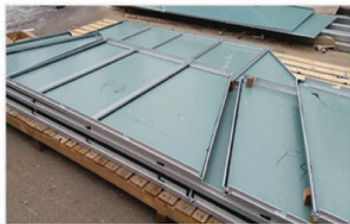
Fuzhou Taihe Plaza

# ALUCOBOND®

THE WORLD LEADER IN ALUMINIUM COMPOSITE MATERIALS

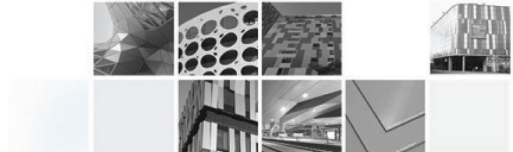


## ROOFING AND SOFFIT APPLICATIONS



# ALUCOBOND®

THE WORLD LEADER IN ALUMINIUM COMPOSITE MATERIALS



## INTERIOR CLADDING

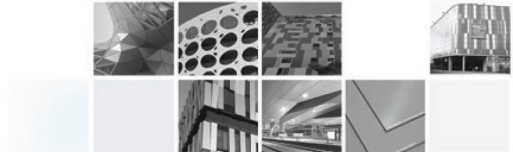
- Products Proposed: ALUCOBOND® PE/ Plus / A2





# ALUCOBOND®

THE WORLD LEADER IN ALUMINIUM COMPOSITE MATERIALS



## INTERIOR CLADDING



# ALUCOBOND®

THE WORLD LEADER IN ALUMINIUM COMPOSITE MATERIALS

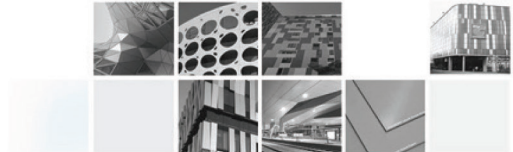


## CEILING

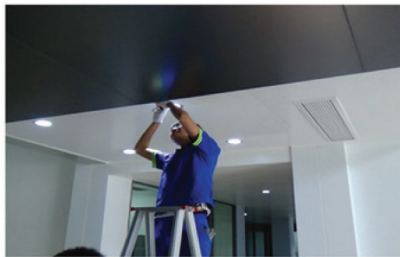


# ALUCOBOND®

THE WORLD LEADER IN ALUMINIUM COMPOSITE MATERIALS

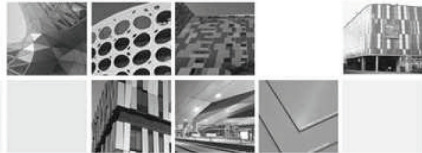


## CEILING



# ALUCOBOND®

THE WORLD LEADER IN ALUMINIUM COMPOSITE MATERIALS



## WHY ALUCOBOND® VALUE ADDED SERVICES

- ALUCOBOND® understands clients need for a seamless and beautiful looking façade, roofing, soffit, interior or ceiling cladding
- Dedicated technical resource – designing a customized solution to suit respective project based on the elevation drawings.
- Experience and expertise to make intelligent recommendations on products, finishes, processing and fixing systems apt for any application
- Saves time, money and at the same rendering a seamless and consistent looking application
- ALUCOBOND® has developed proprietary fixing systems which suit every kind of application's requirements.
- State of the art manufacturing plants with years of experience of providing Valued Added Services to various projects around the world

**ALUCOBOND®**

---

THANK YOU!!