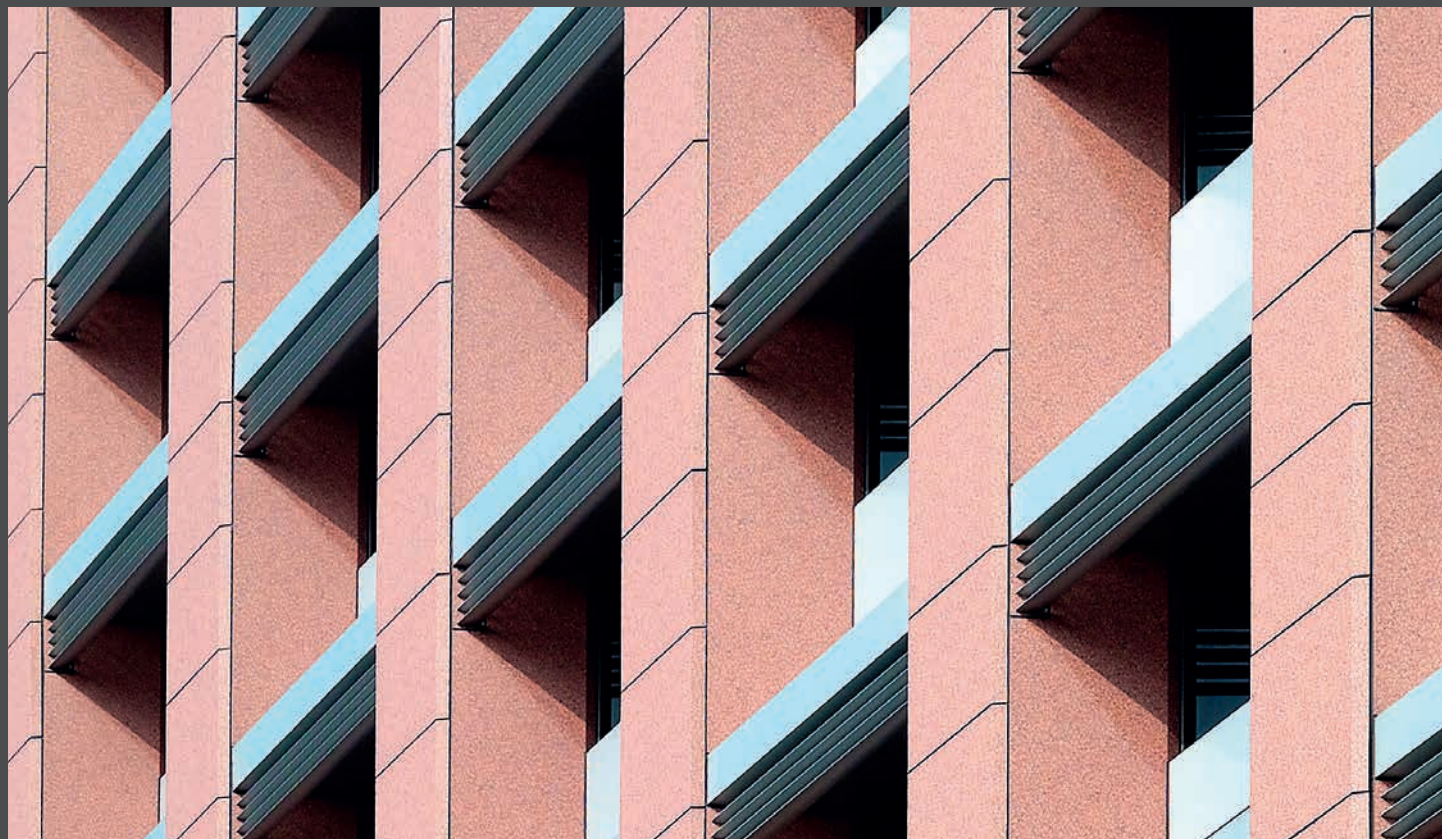
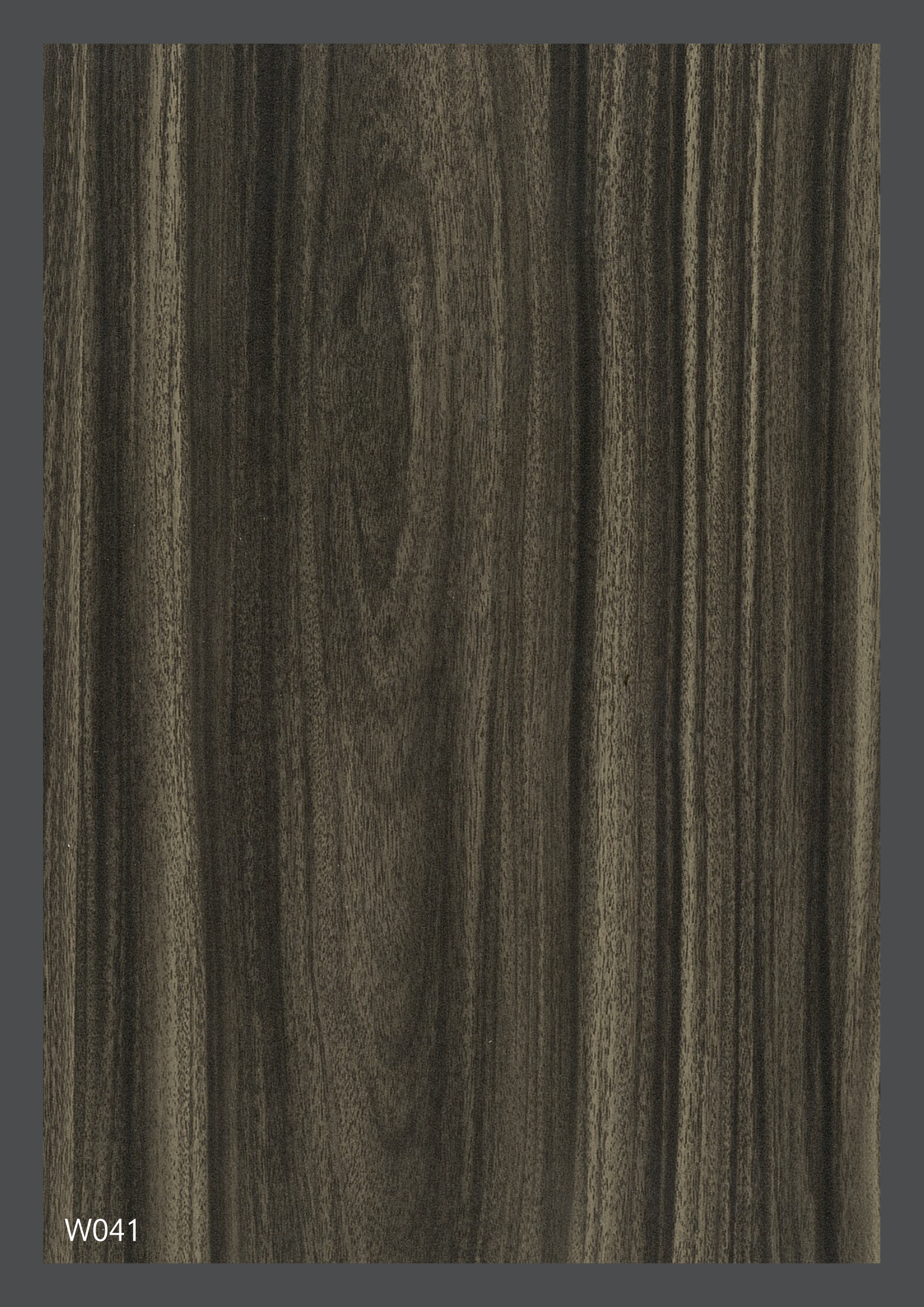


# ALUCOBOND®

## Wood and Stone look

NATURE'S OWN COLOURS





W041

# Wood Look

ALUCOBOND® Wood Look is available in many modern wood patterns. It offers the same unequalled material properties for which all ALUCOBOND® products are known for; extraordinary flatness and rigidity, excellent formability, low weight and outstanding weather resistance for exterior and interior cladding applications. The use of a high quality paint system applied in a continuous coil-coating process ensures that the Wood Look is not compromised for many decades to come. These patterns are available in 1000, 1250, 1500 & 1575mm widths.



*N.B: Colours and patterns shown here may differ slightly with that on the actual panels*

Looking for more options?

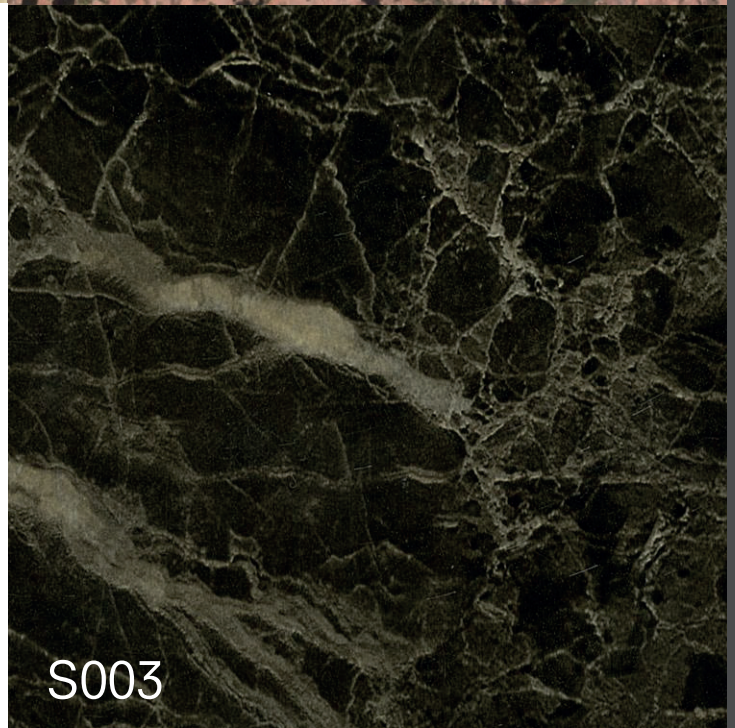
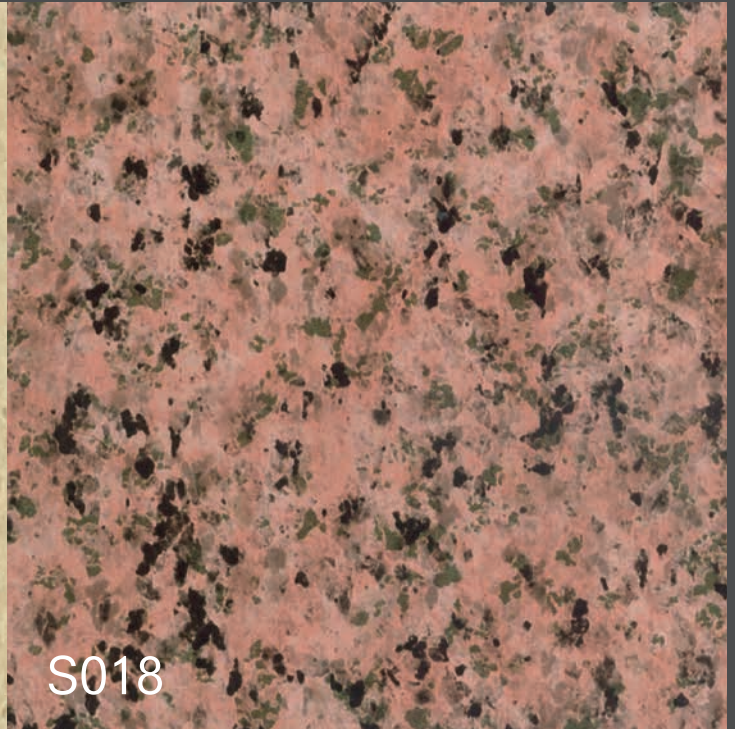
Please log on to <http://alucobond.com.sg/products/alucobond-plus/colours-and-surfaces/wood-look/> and choose from a wide variety of designs and patterns



S009

# Stone Look

The versatile aluminum composite panels are now available with a variety of Stone patterns. Thanks to a special coating process, it is possible to reproduce brilliant surfaces with a natural stone pattern. The high quality standard of the continuous coil-coating method guarantees excellent durability of the PVDF coating even under extreme weather conditions. Stone look combines all the advantages of ALUCOBOND® technology and is processed just as easily all other ALUCOBOND® panels. These patterns are available in 1000, 1250, 1500 & 1575mm widths.

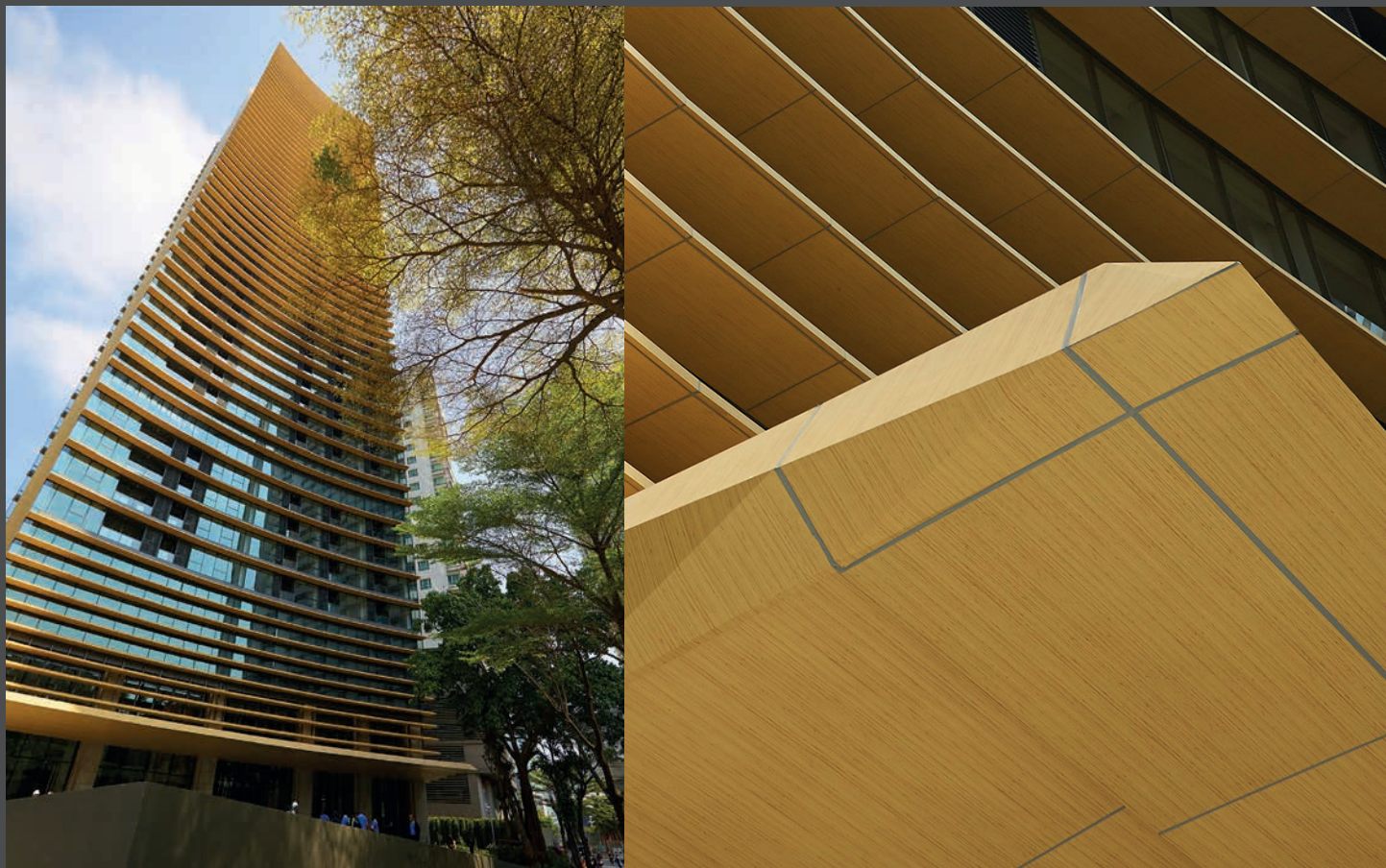


*N.B: Colours and patterns shown here may differ slightly with that on the actual panels*

Looking for more options?

Please log on to <http://alucobond.com.sg/products/alucobond-plus/colours-and-surfaces/stone-look/> and choose from a wide variety of designs and patterns

# Wood Look



Lumpini 24 | Thailand



ARCTERYX retail | China

# Stone Look



Nanning Dream of Island | China



Mackay Memorial Hospital | Taiwan

Your vision materialized.  
**ALUCOBOND®**

**ALUCOBOND (FAR EAST) PTE LTD**

6 Shenton Way #40-05  
OUE Downtown 1  
Singapore 068809  
Tel: (65) 6303 9750  
Fax: (65) 6303 9751  
Email: [sales@alucobond.com.sg](mailto:sales@alucobond.com.sg)  
[www.alucobond.com.sg](http://www.alucobond.com.sg)

**3A COMPOSITES MIDDLE EAST (BRANCH)**

Almas Tower, JLT  
P.O. Box 340 505, Dubai  
U.A.E  
Mob: (971) 50 5574676  
Email: [markus.setz@3AComposites.com](mailto:markus.setz@3AComposites.com)  
[www.alucobond.com](http://www.alucobond.com)

**3A COMPOSITES INDIA PVT. LTD.**

Unit 852, 5th Floor,  
Solitaire Corporate Park,  
Andheri-Kurla Road,  
Andheri (East),  
Mumbai 400 093, India  
Tel: (91) 22 4265 4500  
Fax: (91) 22 4265 4545  
Email: [info.india@alucobond.com](mailto:info.india@alucobond.com)  
[www.alucobond.in](http://www.alucobond.in)

**3A COMPOSITES (JIANGSU) LTD.**

10 South Hehuan Road  
Zhonglou, Changzhou 213023,  
China  
Tel: (86) 519 8166 5766  
Fax: (86) 519 8166 5999  
Email: [info.china@alucobond.com](mailto:info.china@alucobond.com)  
[www.alucobond.com.cn](http://www.alucobond.com.cn)



**3A COMPOSITES GmbH**

Alusingenplatz 1  
D-78224 Singen,  
Germany  
Tel: (49) 0 7731 941 0  
Fax: (49) 0 7731 941 3510  
Email: [info.eu@alucobond.com](mailto:info.eu@alucobond.com)  
[www.alucobond.com](http://www.alucobond.com)

**3A COMPOSITES USA, Inc.**

3480 Taylorsville Highway,  
Statesville, N.C.28625  
U.S.A  
Tel: (1) 704 872-8974  
Fax: (1) 704 878-2708  
Email: [info.usa@3AComposites.com](mailto:info.usa@3AComposites.com)  
[www.AlucobondUSA.com](http://www.AlucobondUSA.com)